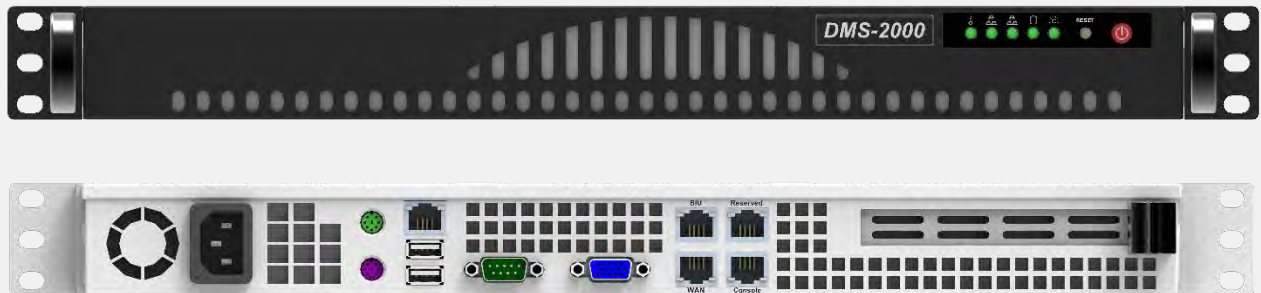


SOLID ALLIANCE™ TR



ALLIANCE-TR is SOLiD's multi-operator, neutral host Distributed Antenna System (DAS) that efficiently delivers wireless RF signals into any indoor or outdoor location difficult to cover with traditional macro networks.

In ALLIANCE-TR, the DMS-2000 provides an enterprise level management interface between the DAS and your Network Operations Center (NOC).

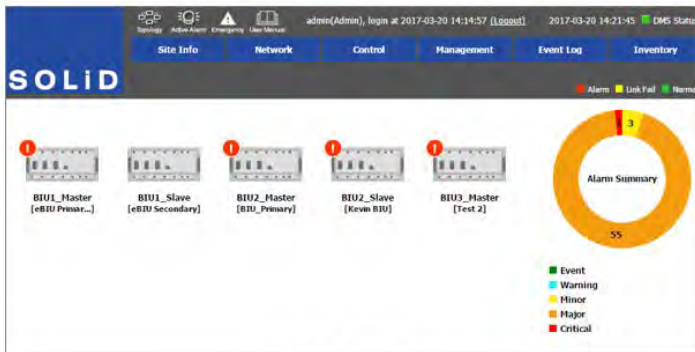
- Improves customer service
- Expedites issue resolution
- Eliminates unnecessary truck rolls
- Reduces sparing requirements

Description

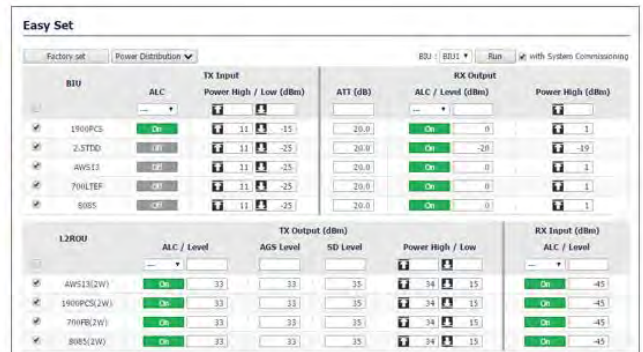
SOLiD's DMS-2000 provides an enterprise level management interface between the DAS and Network Operations Center (NOC). The DMS-2000 gathers vital system information and alarm data from the DAS network and transmits via SNMP to one or more NOC facilities for monitoring.

The DMS-2000 minimizes downtime and ensures your SOLiD system remains reliable by continually conducting comprehensive DAS system health checks and reporting changes in status and alarm detection in real-time.

Whether you monitor with your own network computer or utilize a sophisticated carrier-grade NOC, the DMS-2000 interface will perform to the highest standards in any application.



Main Screen



Easy Set

No.	Device	Band / Name	TX Power	Firmware	Installed	Serial No.
1	BIU1_Master	eBU Primary One	---	7.1	2017-01-23 21:29:13	16600002
2	MCBU1	700LTE_FH / 700LTE_FH / 8085 / 8085 /	--- (dBm)	6.6	2017-01-23 21:29:15	16600002
3	MCBU2	1900PCS / VZW - LTE 1900PCS / VZW - CDMA 1900PCS / ATT - LTE 1900PCS / ATT - CDMA	--- (dBm)	6.6	2017-01-23 21:29:15	16600001
4	MCBU3	AWS13 / AWS13 / AWS13 / AWS13 /	--- (dBm)	6.6	2017-01-23 21:29:15	16600001
5	MCBU4	2.5TDD /	--- (dBm)	6.6	2017-01-23 21:29:16	16600002

Inventory

Email Notification configuration form:

Contact: SMTP Server

SMTP Server: ex) smtp.example.com

Port: 465 default: 25 or 465 or 587

User Name: admin

Password:

From Name:

From Email:

Secure Connection: SSL/TLS

Notification Period: 10 (mmute)

Buttons: Test, Apply

Email Notification

Firmware Download interface:

Choose File: No file chosen | File Upload

No.	Device	File Name	Version	Upload Time	Note	Remove
1	BIU	Alliance20_eBU_V710_20161130_17.BIU	7.1	2017-01-23 19:32:53		
2	SDM-CPU	Alliance20_SDM_CPU_V12_20150901.CPU	1.2	2017-01-31 18:44:53		
3	SDM-SCRIPT	Alliance20_SDM_SCRIPT_V10_20150716.SCRIPT	1.0	2017-01-31 18:45:11		
4	SDM-FPGA	Alliance20_SDM_FPGA_V10_20150716.FPGA	1.0	2017-01-31 18:45:00		

Buttons: Download, Cancel

No.	BIU	Device	Sending	Downloading	Status
1	BIU1_Master	BIU	100%	1/1	Completed
2	BIU1_Slave	BIU	100%	1/1	Completed
3	BIU2_Master	BIU	100%	1/1	Completed
4	BIU2_Slave	BIU	100%	1/1	Completed

Firmware Download

Event Log interface:

BIU: All | Type: Alarm, Control, Security

Device: All | Keyword: | Date/Time: | Last 1 Day | Last 1 Mon | Clear

Level: All | Exact Match

Found 2630 Events | Log entries per page: 25 | Save | Refresh

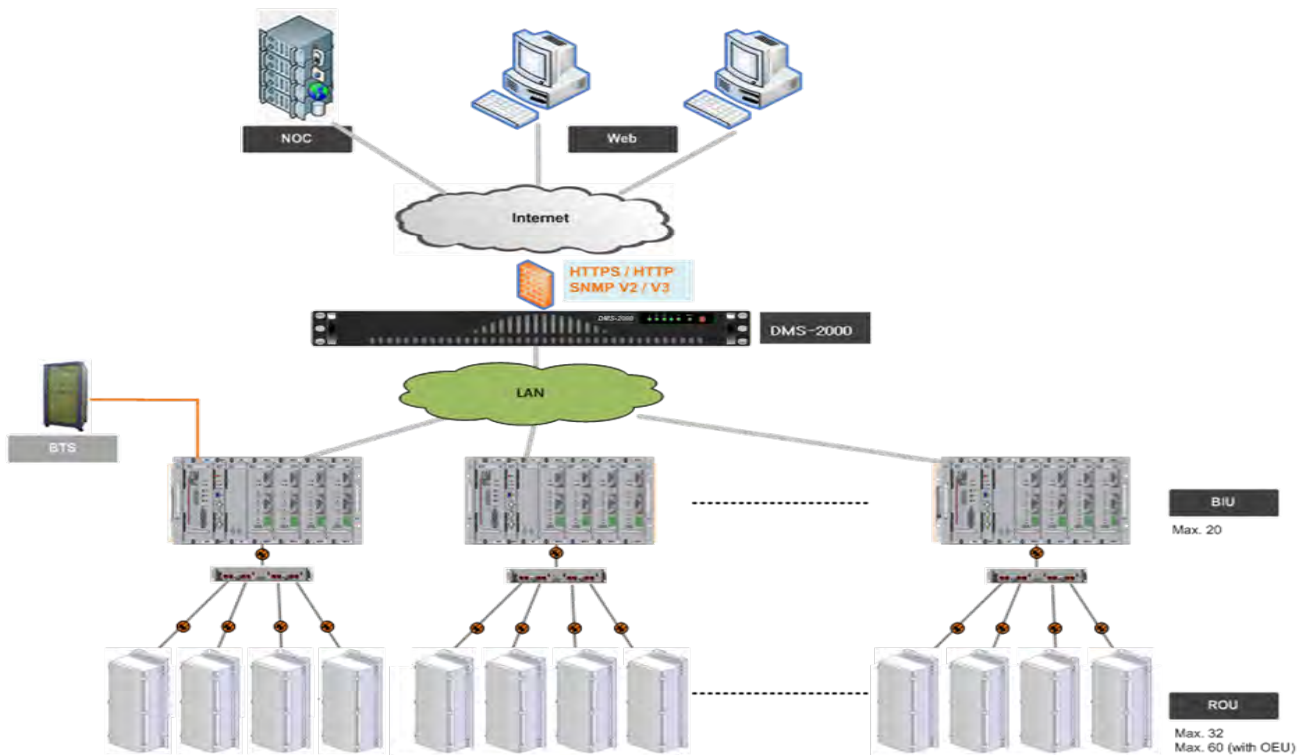
No.	Type	Level	BIU	Device	Name	Message	Time Received	Time Cleared
1	Alarm	Minor	BIU1_Master	BIU	Test 2	System Startup	2017-03-20 14:36:08	2017-03-20 14:37:20
2	Alarm	Minor	BIU1_Slave	BIU	Kevin BIU	System Startup	2017-03-20 14:36:29	2017-03-20 14:37:01
3	Alarm	Minor	BIU1_Slave	BIU	eBU Primary One	System Startup	2017-03-20 14:36:55	2017-03-20 14:36:57
4	Alarm	Minor	BIU1_Master	BIU	eBU Primary One	System Startup	2017-03-20 14:36:02	2017-03-20 14:36:04
5	Alarm	Minor	BIU2_Master	BIU	BIU_Primary	System Startup	2017-03-20 14:36:02	2017-03-20 14:36:04
6	Alarm	Minor	BIU1_Master	000F1-0000-4280042-48B1-		TX Low	2017-02-14 13:05:04	2017-03-20 14:36:47
7	Alarm	Minor	BIU1_Master	000F1-0000-4280042-48B1-		TX Low	2017-02-14 13:05:04	2017-03-20 14:36:47
8	Alarm	Minor	BIU1_Master	000F1-0000-4280042-48B1-		TX Low	2017-02-14 13:05:14	2017-03-20 14:36:47
9	Alarm	Minor	BIU1_Master	000F1-0000-4280042-48B1-		TX Low	2017-02-14 13:05:14	2017-03-20 14:36:47
10	Alarm	Minor	BIU1_Master	000F1-0000-4280042-48B1-		Door Open	2017-02-22 14:27:35	2017-03-20 14:36:47
11	Alarm	Minor	BIU1_Master	000F1-0000-500	eBU Primary One	PD Fail	2017-02-22 14:30:25	2017-03-20 14:36:47
12	Alarm	Minor	BIU1_Master	000F1-0000-4280042-48B1-		Link Fail	2017-02-22 14:30:35	2017-03-20 14:36:47
13	Control	Event	DMS	DMS1200REL6	admin [73.70.28	Firmware downloaded.	2017-03-20 14:35:27	---
14	Alarm	Minor	BIU1_Master	BIU	Test 2	Link Fail	2017-03-20 14:22:48	2017-03-20 14:23:58

Event Log

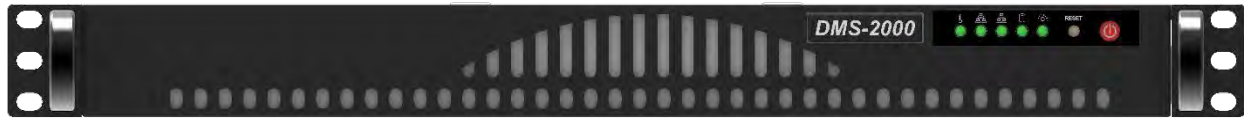
Features

- Centralized management for devices and auto discovery of the DAS network topology
- Web-based management over HTTP/HTTPS for up to 20 BIU units
- Quick and easy configuration using EasySET commissioning and auto Power Distribution
- Configurable SNMP V2/V3 traps sent to NOC
- Support for private enterprise MIB files provided for SNMP traps
- Configurable IP settings for DMS and NOC(s)
- Auto assigned BIU IP addresses
- Real-time alarm monitoring and collection
- Configurable alarm control: duration and reporting times (hysteresis), alert levels, troubleshooting, masking, email notification,
- Programmable dry contacts
- DMS-2000 system upgrades via the web or USB flash
- Firmware upgrades for all devices from DMS
- Custom filtering and data export for inventory reports, alarm logs, event logs, trend logs
- Historical trend data for devices
- Automatic or manual backup and for restoring device settings

Network Configuration



Specifications



Parameter	Specification
Available Interface Ports	One LAN Ethernet Port each for WAN, BIU connection, local console port One LAN Ethernet Port reserved for future use. Two USB Ports (USB rating: 5v, 0.5amp)
External Alarm Connector	Programmable dry contacts
Front Panel Controls / LED Indicators	System RESET button Power ON/OFF button LEDs show status for: power, system activity, network activity, high temp warning
Power Specifications	AC Voltage: 100-240V, 60-50Hz Amperage: 2 amps maximum Power consumption: 260W at Full Load 6ft. cord with NEMA 5-15 plug (included)
Dimensions (W x H x D mm)	Rack-mountable (19-inch, 1U) 426 mm x 43 mm (1U) x 356 mm
Weight	6.4 kg (14 lbs)
Operating Environment	Operating Temp: (50° to 95° F) Humidity Range: 8 ~ 90% non-condensing
Power Safety / Approvals	USA: UL Listed & FCC. Canada: CUL Listed. Germany: TUV Certified. Europe/CE Mark: EN 60950/IEC 60950-Compliant. CCC Certified Russia - FAC & CU Certified
MTBF	136.98 years

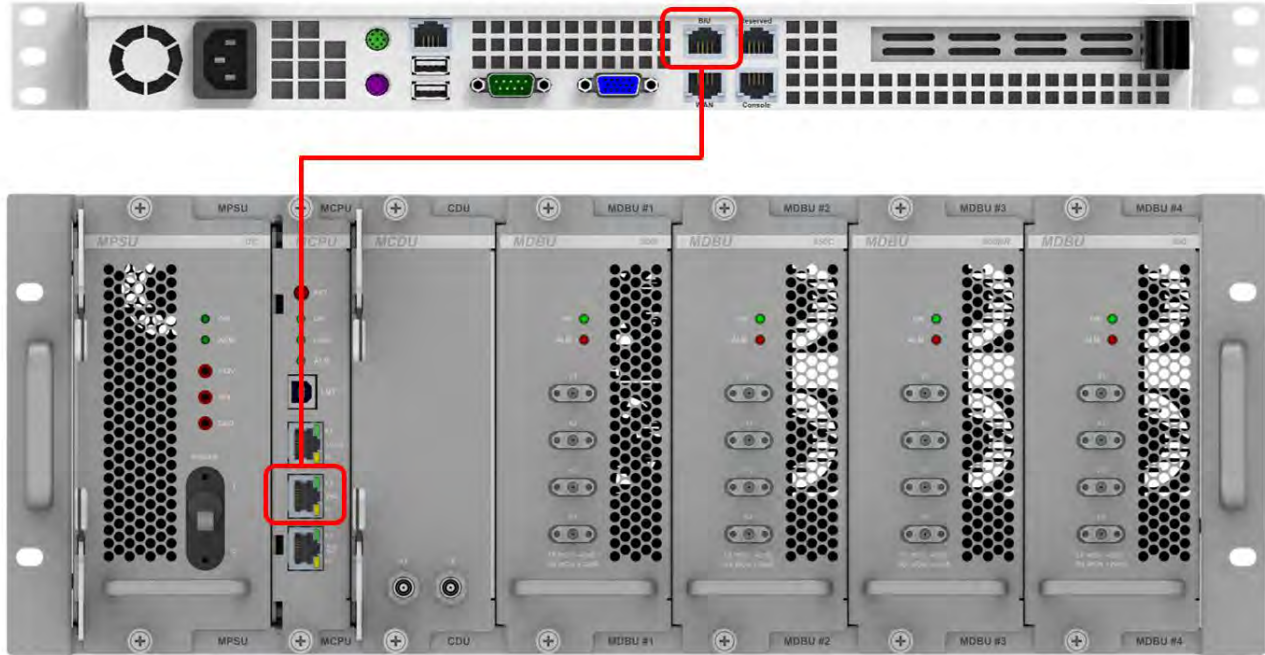
Parts Description - Accessories

The following items ship with the unit.

Installation Items	Required Accessories	Remarks
BIU port connection	Straight type 2m CAT6 Ethernet cable	Qty 1
Connection to power supply	AC 110-220V Power Cable	Qty 1
Ground connection	M4 Screw. SOLiD recommends using a ground cable AWG #10 ~ 12 with lugged end. Ground cable does not ship with unit.	Qty 1

DMS-2000 Connection to BIU

Use the supplied CAT6 Ethernet cable to connect the BIU port at the back of the DMS to the port labelled “DMS” on the eMCPU at the front of the BIU.



Ordering Information

Part Name	Order Description
TR_DMS_2000	ALLIANCE-TR DAS management System 2000



Brazil: Av. Paulista, 2300, Andar Pilotis, CEP 01310-300, São Paulo – SP, Brazil
Mexico: Av. Juan Vázquez de Mella 481, Edificio CAD, Segundo Piso, Oficina 42 Col. Los Morales, Del. Miguel Hidalgo, Polanco, C.P 11510, Ciudad de México