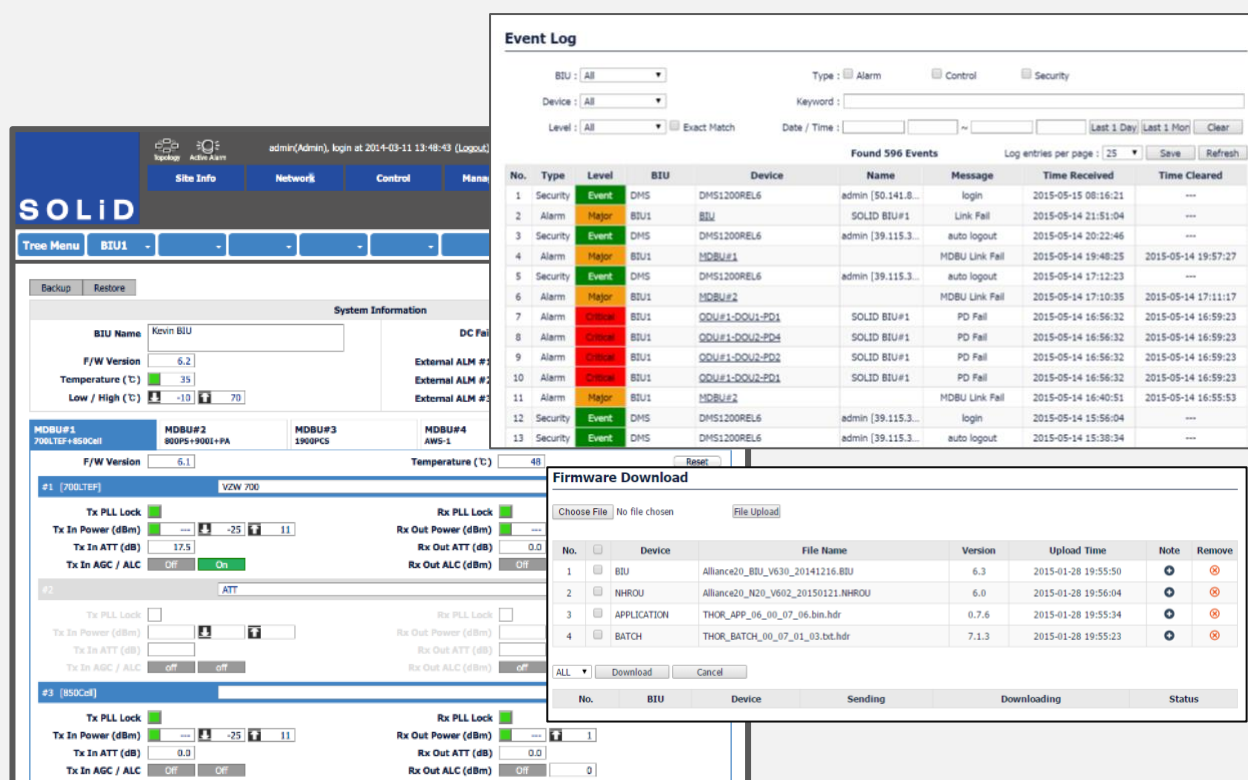


ALLIANCE Multi-Operator DAS

DMS-1200_R2 DAS Management System

Product Specifications / Parts List



SOLiD's DMS-1200 provides an enterprise level interface between the fiber optic Distributed Antenna System (DAS) and your Network Operations Center (NOC). The DMS-1200 gathers vital system information and alarm data from the DAS network and transmits via SNMP to the designated NOC facility for monitoring.

The DMS-1200 minimizes downtime and ensures your SOLiD system remains reliable. It continually conducts comprehensive DAS system health checks and reports in real time changes in status and alarm detection.

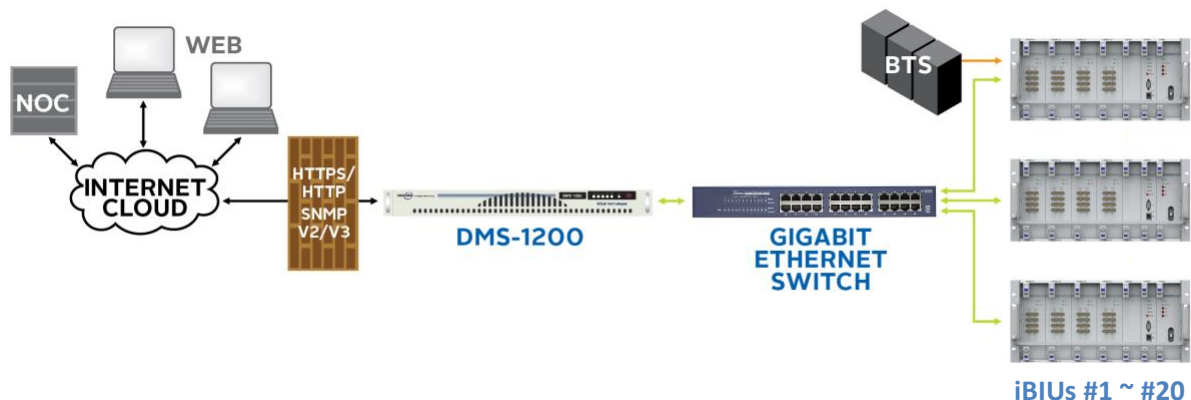
Whether you monitor with your own network computer or utilize a sophisticated carrier-grade NOC, the DMS-1200 is the interface that will perform to the highest of standards in any application.

Features

The DMS-1200 provides these management functions for the DAS network:

- Centralized management for devices and auto discovery of the DAS network topology
- Web-based management over HTTP/HTTPS for up to 20 iBIU units
- Quick and Easy Configuration using EasySET commissioning and auto Power Distribution
- Configurable SNMP V2/V3 traps sent to NOC
- Support for private enterprise MIB files provided for SNMP traps
- Configurable IP settings for DMS and NOC(s)
- Auto assign iBIU's IP addresses
- Real-time alarm monitoring and collection
- Alarm Control: hysteresis, alert level, troubleshooting, masking, email notification
- Programmable dry contacts
- DMS-1200 system upgrades via the web or USB flash
- Firmware upgrade for all devices from DMS
- Custom filtering and data export for Inventory reports, Alarm logs, Event logs, Trend logs
- Historical trend data for devices
- Automatic or manual backup and for restoring device settings

The DMS-1200 communicates with the DAS through the system's BTS Interface Units (iBIUs) over a standard TCP/IP connection or secure HTTP / HTTPS protocol. Alarms and device status are transmitted to the NOC via SNMPv2/v3. You can access the DMS-1200 functions either onsite or remotely. The DMS-1200 server is based on the Ubuntu 20.04 LTS operating system. The user interface can be viewed in any standard web browser. Connecting multiple iBIUs requires a Gigabit Ethernet switch.



Specifications



Parameter	Specification
Available Interface Ports	4 Ethernet Ports: WAN, BIU connection, local console port, reserved USB Port #1, #2 (USB rating: 5v, 0.5amp)
Front Panel Controls / LED Indicators	System RESET button Power ON/OFF button LEDs show status for: Power, System Activity, Network Activity, High Temp Warning
Power Specifications	AC Voltage: 100-240V, 60-50Hz (Option 1) DC Voltage: 48V (Option 2) Amperage: 1.45 amps maximum (AC), 3 amps (DC) Power consumption: 50W Typical, 160W at Full Load
Dimensions (W x H x D mm)	Rack-mountable (19-inch, 1U) 17.1"W (fits 19" rack) x 1.75"H (1U) x 15.0"D 434.6 mm x 43.2 mm (1U) x 382.2 mm
Weight	20.7 lbs (9.4 kg)
Operating Environment	Operating Temp: 50° to 95° F (10 to 35°C). Humidity Range: 8 ~ 90% non-condensing
Power Safety / Approvals	<div> <div> IS 13252 (Part 1) IEC 60950-1 R-41000698 www.bis.gov.in India Model Name: TPS-W023-ATX </div> <div> </div> </div> <p>警告使用者: 此為甲類資訊技術設備, 於居住環境中使用時, 可能會造成無線干擾, 在此種情況下, 使用者會被要求採取某些適當的對策。</p>

Part Numbers

DMS-1200 Description	Part Number
DAS Management System (DMS) for ALLIANCE – AC Power	DMS_1200_R2_AC
DAS Management System (DMS) for ALLIANCE – DC Power	DMS_1200_R2_DC



SOLiD Gear, Inc.
800 Klein Road, Suite 200
Plano, TX 75074
PHONE: 888.409.9997
EMAIL: sales@solid.com
WEB: www.solid.com

